



Ecole Nationale  
Supérieure  
de l'Electronique  
et de ses Applications

# GUIDE for Incoming Students

## WELCOME TO ENSEA

**We are very pleased that you have planned to spend some study time at ENSEA.**

**This will certainly be a personally and academically enriching time for you and will provide you with a new range of experiences.**

**We hope that you will be successful in your study or internship and will also enjoy living and working with French students.**



# CONTENTS

## **I) INTRODUCTION TO ENSEA.....**

- A.1.      **Where is ENSEA?** 5
- A.2.      **Whom to visit first?** 6
- A.3.      **ENSEA Degree Programs**7
- A.4.      **ENSEA Practical Information** 10

## **II) ADMINISTRATIVE REQUIREMENTS .....**

- B.1.      **Administrative Requirements** 11
- B.2.      **Request for a student visa** 11
- B.3.      **Application to a room in a student dormitory** 11

## **III) PRACTICAL INFORMATION .....**

- C.1.      **Planning a budget** 12
- C.2.      **Housing** 12
- C.3.      **Meals** 14
- C.4.      **Health** 15
- C.5.      **Transport** 16
- C.6.      **Other information** 18

## **IV) CULTURE AND LEISURE .....**

- D.1.      **The city of Cergy-Pontoise** 19
- D.2.      **Student Life** 19
- D.3.      **Culture and Leisure in ENSEA** 20
- D.4.      **Shopping in Cergy-Pontoise** 20
- D.5.      **Visiting Paris** 21

## **V) USEFUL ADDRESSES AND TELEPHONE .....**

- E.1.      **Healthcare facilities** 23

## I) INTRODUCTION TO ENSEA

ENSEA is a leading European graduate school and one of the 220 French engineering schools. Its rank is among the top 5 in Electronics. With its advantageous position close to Paris (30 minutes from the Champs-Élysées), Roissy Charles De Gaulle Airport, and Versailles, ENSEA has been granting a French “Diplôme d'ingénieur”, which is a Master of Science with honours in Electrical Engineering since 1952.

ENSEA has more than 5.000 alumni, and about 800 graduate students, with 90 professors and 180 visiting professors from industry and partner institutions. The students evolve through 440 elective courses and 8 final year specializations. ENSEA also includes 27 teaching laboratories and 2 top research teams (ETIS UMR 8051, ECS EA 3649) which gather roundly 100 researchers, including PhD and post-doctoral students.

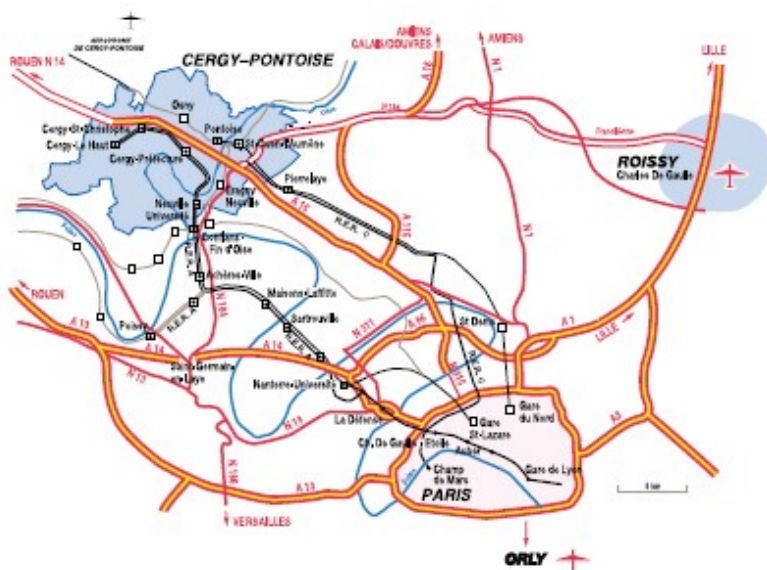
As a French Engineering School, all of our students find a work within 6 months after graduation, mainly in one of our 200 corporate partners. ENSEA has a partnership with lots of top universities around the world, in 30 countries on 5 continents, and each year, nearly 20 foreign students come to study here. On the other hand, many of our students have also experienced work and study abroad.

Full legal name of the institution	Ecole Nationale Supérieure de l'Electronique et de ses Applications (ENSEA)
ERASMUS Code	F CERGY01
Address	6, Avenue du Ponceau F-95014 Cergy Pontoise Cédex France
Phone	+33 1 30 73 66 66
Fax	+33 1 30 73 66 67
Internet Address	<a href="http://www.ensea.fr">http://www.ensea.fr</a>
Director of Institution	Laurence Hafemeister

### A.1. Where is ENSEA?

**ENSEA is at about 40 minutes by train from Paris. To get to ENSEA from Paris, you can take a train:**

- **From Gare Saint-Lazare station, take the train for Cergy-Le-Haut and get off at Cergy-Préfecture. This should take 45 minutes and cost around €5.00.**
- **From Gare du Nord station, take the RER B (Regional Express Railway) for Roissy Airport. Get off at Châtelet-Les-Halles and take the RER A for Cergy-Le-Haut. Get off at Cergy-Préfecture. The entire trip should take 1 hour and cost around €5.00€.**
- **From Charles de Gaulle Etoile station, take the RER A for Cergy-Le-Haut. Get off at Cergy-Préfecture. The entire trip should take 40 minutes and cost around €5.00€.**



## A.2. Whom to visit first?

The International Relations Department is located on the 2<sup>nd</sup> floor of the school.

- Thomas TANG (Head of International Relations, room 231)
- Carine SABOURAUD (FAME Program Coordinator, room 211)
- Nacira REBIAI (Assistant of International Relations, room 233)

The school is open from Monday to Friday, from 8 A.M. to 8 P.M. and on Saturday from 8 A.M. to 12 P.M and students must use their access card.

### ENSEA - Relations International Department

6, avenue du Ponceau

95014 Cergy Cedex

Tel : +33 1 30 73 66 06

Mail : [ri@ensea.fr](mailto:ri@ensea.fr)

International Office Head  
(ERASMUS Coordinator)

Phone

Fax

E-mail

Pr.Thomas TANG

Head of International Relations

+33 1 30 73 62 34

+33 1 30 73 66 67

[thomas.tang@ensea.fr](mailto:thomas.tang@ensea.fr)

Name of Contact Person  
(Accommodation and  
incoming/outgoing)

Phone

Fax

E-mail

Nacira REBIAI

Assistant International Relations

+33 1 30 73 66 06

+33 1 30 73 66 90

[rebiai@ensea.fr](mailto:rebiai@ensea.fr)

### A.3. ENSEA Degree Programs

#### ↳ Diplôme d'ingénieur

As one of the French Engineering School, ENSEA has been granting a French “*Diplôme d'ingénieur*”, which is a Master of Science with honours in Electrical Engineering since 1952.

The way the students enter ENSEA is very elitist. After the High School graduation, the most part of the students are first selected to go through a two-year preparatory class which consists in intensive lectures in both Maths and Physics. They are then selected again within an entrance examination, which is the same as the Centrale and Supélec Engineering Schools.

Once inside the school, they have five semesters of lectures, two summer internships, and then one final semester of internship to validate the “*Diplôme d'Ingénieur*”.

#### ↳ ECTS (European Credit Transfer System)

Within the framework of the “LMD” system, ENSEA has adopted the ECTS system which makes it easier to compare to your own university system.

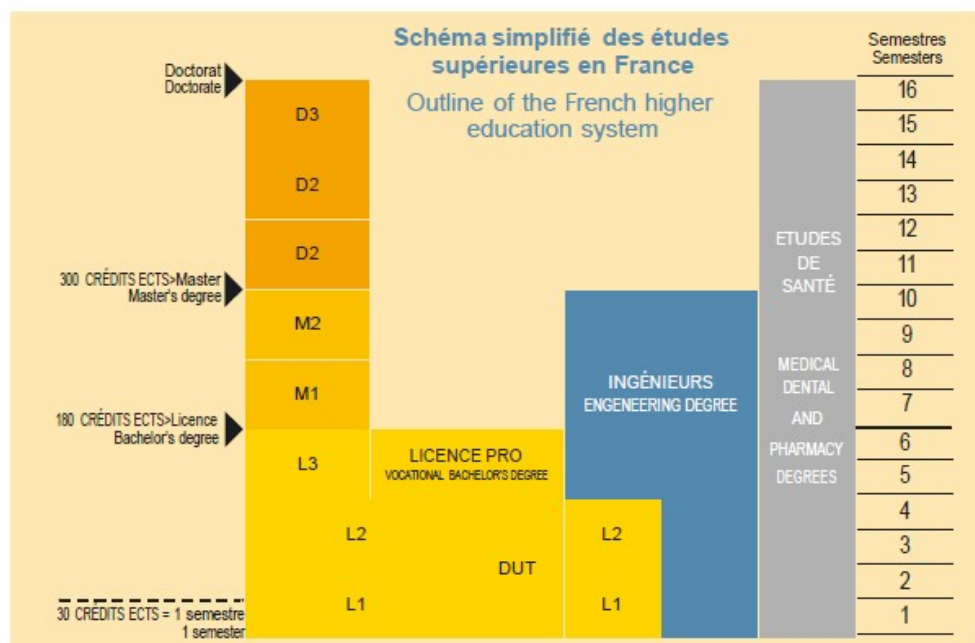
In the chart for each year of studies you will see that each course corresponds to a certain number of ECTS. You must earn a total of 30 ECTS each semester at ENSEA. These credits will then be validated by your university, if an exchange program is signed.

Each student receives a transcript after the final exams. It includes: the student's marks, the list of courses taken, the number of ECTS credits earned, the marks according to the local system, and marks according to the ECTS system. With this transcript your university can more easily understand and recognise the marks you have obtained during your studies at ENSEA.

#### ↳ ENSEA French Culture Classes

To help students make the most of their international experience, ENSEA can propose depending on the places left French culture courses. The classes aim to enable non-French-speaking students to improve their French language and their knowledge of the culture.

## FRENCH HIGHER EDUCATION SYSTEM





## ERASMUS & double diploma

<b>Deadline for Applications</b>	<b>Winter term : 30<sup>th</sup> of June</b> <b>(or for 2 semesters at ENSEA)</b>
<b>Academic Calendar</b>	<b>Semester 1: Early Sept. – Mid Jan.</b> <b>Semester 2: Mid Jan. – Mid June</b>
<b>Catalogue &amp; Description</b>	<b><a href="https://www.ensea.fr/fr/1re-et-2e-annee-31">https://www.ensea.fr/fr/1re-et-2e-annee-31</a></b>
<b>Language of instruction</b>	<b>Classes are held in French</b>
<b>Accommodation &amp; Fees</b>	<b>The application for exchange program includes an offer for a room in a dorm. Exchange students are not required to pay fees.</b>

## Programme N+I

<b>Deadline for Applications</b>	<b>October 15<sup>th</sup> – January 10<sup>th</sup></b>
<b>Academic Calendar</b>	<b>Semester 1: Early Sept. – Mid Jan.</b> <b>Semester 2: Mid Jan. – Mid June</b>
<b>Catalogue &amp; Description</b>	<b><a href="https://www.ensea.fr/fr/reseau-ni-57">https://www.ensea.fr/fr/reseau-ni-57</a></b>
<b>Language of instruction</b>	<b>Classes are held in French</b>

## Programme FAME

<b>Deadline for Applications</b>	<b>October 15<sup>th</sup></b>
<b>Application Form</b>	<b>For registration, please contact the International Office <a href="mailto:ri@ensea.fr">ri@ensea.fr</a></b>
<b>Academic Calendar</b>	<b>Spring Semester: Mid Jan. -End May</b>
<b>Catalogue &amp; Description</b>	<b><a href="http://www-fame.ensea.fr/FAMEcourses.php">http://www-fame.ensea.fr/FAMEcourses.php</a></b>
<b>Language of instruction</b>	<b>Classes are held in English</b>

## A.4. ENSEA Practical Information

### ↗ ENSEA Internet Access

**ENSEA provides Internet access through its wireless network. All instructions to connect to the internet will be given by the “CRI” office room 059 (Computer Services) also known as the “Three Musketeers” (because...there are 4 of them...)**

### ↗ ENSEA Library

**It is possible to access the library from Monday to Friday and borrow books. Opening hours may vary.**



## II) ADMINISTRATIVE REQUIREMENTS

### Before Leaving

#### A.5. Administrative Requirements

You have decided to become a visiting student at ENSEA. To do this, you must send in an Application form and a Student file before the deadlines provided according to the program.

In order to benefit from health cover during their stay, European students should obtain the European Health Insurance Card from their local social security office before leaving.

**Non-EU students and students covered by a private insurance plan in their country must sign up for health cover when they enrol at ENSEA.**

#### A.6. Request for a student visa

Only a positive response to an application for admission to a French higher education establishment entitles you to request a visa.

Applications for “student” visas must be made at French consulates

There are several types of visas:

- Short-stay study visa for less than 3 months.
- Long-stay study visa from 3 to 6 months.
- Long-stay study visa for more than 6 months.

#### A.7. Application to a room in a student dormitory

The application for an exchange program include an offer for a room in a dorm. Please contact the Dpt. for more information ([ri@ensea.fr](mailto:ri@ensea.fr))

**Different types of accommodation:**

- A furnished room of 10 m<sup>2</sup> with its own shower. Shared kitchen facilities and toilet. Average cost: 500 € per month.
- A furnished apartment '*studio*' for one person of 12-14 m<sup>2</sup> with its own toilet, shower and kitchen facilities. Average cost: 750 € per month (depending on availability).

### III) PRACTICAL INFORMATION

#### B.1. Planning a budget

The Euro is the national currency. You must show proper identification when changing cash, travellers checks or EuroChecks. You can withdraw money from an ATM machine (Distributeur), using a Eurocard, Mastercard or an International Visa Card.



In order to live comfortably in Cergy-Pontoise, you will need a monthly budget of €650. Below is an example of a typical monthly budget for a single student.

#### B.2. Housing

Important: **All the students need to join a student home insurance ([www.assurances-etudiants.com/en](http://www.assurances-etudiants.com/en)).**

**Home insurance is mandatory in France.**

- ➡ Room in a university dormitory: from €400 to €750
- ➡ Accommodation off campus: from €450 to €750
- ➡ Meals: €250
- ➡ Transportation: €75
- ➡ Leisure activities: €80

↪ A few examples of prices

- **1 loaf of bread at the baker: 0.90 €**
- **1 meal in a university canteen: 3 €**
- **1 sandwich at the baker: 4 €**
- **1 cup of coffee at the coffee shop: 2 €**
- **1 ticket for the cinema: from 5.50 to 9 €**
- **1 RER ticket from Cergy to Paris: 5 €**
- **1 bus or underground ticket: 2 €**

## B.3. Meals

### ↳ Eating around Cergy

Located at about 10 minutes by foot from the Cergy Prefecture station (RER) and the Centre Commercial “Les Trois Fontaines”, ENSEA is not too far from many bakers (nearest at 5 minutes), little restaurants and brasseries. There are also some salad/soup bar and fast food restaurants.



### ↳ Inside ENSEA

The “Cafeteria” is the main meeting point for students between and after lectures and classes, and offers almost any kind of snacks (ranging from 1 for chocolate snack to 4 € for sandwiches menu) and different sorts of hot and cold drinks (0.40 € a coffee to 0.70 € for a coke).

### ↳ Outside ENSEA

You can also lunch at the “Versailles Academy CROUS” restaurants for a fixed student price of 3 € or 6 € depending on your status.

The payment is made with a CROUS IZLY card, you can credit the card with cash only on Tuesdays and Thursdays. You can credit the card online but it may require a French bank account. The CROUS restaurants offer a diversity of meals: Snack bar and brasserie, pizzeria, traditional catering, cafeteria. The CROUS manages 3 restaurants in Cergy-Pontoise close to ENSEA and are open from Monday to Friday (11.30 am to 1.30 pm)

Be careful! Neither the “Cafeteria”, nor the CROUS restaurants do offer evening meals.

## **B.4. Health**

In order to stay in France and obtain a resident permit, all foreigners must provide proof of medical cover which, in the event of a problem, entitles them to complete or partial reimbursement of medical costs (dental work, medication, hospitalisation, etc.).

European students must obtain the European Health Insurance Card before leaving their country.

Non-EU nationals or students that with private insurance plans must sign up for student health cover with Cergy-Pontoise University. This insurance policy costs €200 for the academic year.

You can choose between two organisations that will reimburse your medical costs: La Mutuelle Des Etudiants (LMDE) or la Société Mutualiste des Etudiants de la REgion Parisienne (SMEREP).

### **Caisse primaire d'assurance maladie (CPAM) Val-d'Oise**

2 rue des Chauffours

Immeuble Les Marjoberts

95017 Cergy-Pontoise

Tel.: +33 820 904 128

Fax: +33 1 30 32 51 57

### **Mutuelle des étudiants (LMDE)**

Offices open every day from 11 am to 3:30 pm

Cergy-Pontoise University

Les Chênes tower, 1st floor, office 117

www.lmde.fr - Tel.: +33 810 600 601

### **Société mutualiste des étudiants de la région parisienne (SMEREP)**

Offices open every day from 9 am to 4:45 pm (4:30 pm on Fridays)

Cergy-Pontoise University

Les Chênes tower, 2nd floor, office 214

www.smerep.fr - Tel.: +33 1 56 54 36 34

## B.5. Transport

### ↳ The Network

**Paris Ile-de-France is divided into 8 zones:**

➡ 1 to 2: Paris and immediate surrounding

➡ 3 to 5: Paris suburbs (including Cergy)

➡ 6 to 8: Paris outer suburbs

To go to Paris from Cergy, one must have a 1 to 5 zone ticket.



### ↳ Fare

Tickets can be purchased at ticket counters or distributors located in the metro and RER stations, and certain tobacco stores.

The best way to travel in Paris Ile-de-France is to choose the fare or option that is best suited to your needs.

➡ 1 ride Cergy/Paris: Around 6€

➡ 10 tickets Cergy/Paris (1 carnet): 49.20 €

➡ 1 ride inside Paris (zone 1/2): 1.90 €

➡ 10 tickets inside Paris (1 carnet): 14.90 €

➡ 1 “Pass Navigo” (monthly pass unlimited frequency for zone 1 to 5): 70 € + 5 € for the creation of the pass.

### ↳ Packages

There are several packages that allow you to travel within and around Paris area:

➡ Mobilis 1-Day pass

(from Cergy to Paris: 15 €). The ticket lets you use several types of transportation in an unlimited fashion (frequency and zones) for one day. The same ticket on weekend is sold at 6.85 € for students under 26. (More info on <https://www.ratp.fr/en/titres-et-tarifs>)



### ➡ Paris Visite pass

The “Carte Paris Visite” pass offers unlimited metro, RER, and bus travel, plus reductions at selected tourist sites.

This individual ticket is good for 1 to 5 days, giving you unlimited travel throughout Paris Ile-de-France (from 26 € for 1 day, to 66 € for 5 days).

(More info on <https://www.ratp.fr/en/titres-et-tarifs>)

### ➡ Transilien recreational pass

4 combination passes, including SNCF train fare and entrance fee for each of the 4 tourist sites available (Château de Versailles, Château de Fontainebleau, Château d’Auvers and France Miniature).

(More information on [www.transilien.com](http://www.transilien.com))

### ➡ Train

The France Pass will let you travel anywhere on the French SNCF railway network for 3 days.



## B.6. Other information

### ☞ Telephone

To telephone to another country from France, you must dial 00, then the country code and then the number of your correspondent.

**International Pre-Paid Cards** are a good way of making international calls at reduced tariffs. These can be used from a fixed line or from a phone booth or kiosk. The validity of the card is generally limited to three months from first use. You can buy them from tobacconists, post office...

**Mobile or cell-phone:** you can either take out a monthly rental contract or use pre-paid cards. (Operator in France: *Bouygues, SFR, Free, Orange, La Poste Mobile, NRJ Mobile*)

**International Contract: You can also ask if your operator can do international contract.**

### ☞ Postal Services

**The Postal Services include a daily delivery. And the various post offices offer other services: selling stamps and telephone cards, sending parcels, making money transfers, recharging mobile telephones, accessing internet...**

☞ **Chronopost Express Mail Service, Tel.: 0 825 801 801**

☞ **D.H.L. Worldwide Express Delivery, Tel.: 0 800 202 525**

### ☞ Lost and Found

**If you lose any of your personal belongings, you may be able to recover them at the “lost and found “desk (Objets Trouvés). Make your claim as soon as possible at the Police Headquarters.**

**Contact your bank/insurance in the event that your credit card is lost or stolen. In the event that your passport is lost, declare it at the nearest police station, then report to your embassy.**

## **IV) CULTURE AND LEISURE**

### **C.1. The city of Cergy-Pontoise**

**A UNIVERSITY TOWN IN THE HEART OF VAL D'OISE, A DYNAMIC AND THRIVING COMMUNITY.**

**ENSEA, together with 20 other higher education institutions (the University of Cergy-Pontoise, ESSEC, EISTI, Institut Polytechnique Saint-Louis, ITIN) share the same diverse and multidisciplinary campus.**

**With its advantageous position close to Paris (30 minutes from the Champs-Élysées), Roissy-CDG airport and Versailles, and its full range of cultural and sporting facilities, Cergy has attracted a number of leading industries to establish their headquarters in the area such as 3M, SIEMENS, CIC, SPIE, SAGEM, THALES, PEUGEOT, RENAULT, CLARINS, VUITTON, JOHNSON CONTROLS...**

**Cergy has its own Technology Park with numerous start-ups.**

### **C.2. Student Life**

**Cergy-Pontoise is a university town which offers a whole range of indoor and outdoor activities and facilities such as water sports on Cergy's lake, music festivals, concerts, cinemas, theatres, swimming pools, tennis courts, a skating rink...**

**At ENSEA, student organizations flourish and they offer a wide variety of activities for management, personal development and creativity. Those motivated can follow their ambition to positions of responsibility in the Student Union, on the school newspaper, or through the student entrepreneurial organization.**

### **C.3. Culture and Leisure in ENSEA**

#### **↳ Library**

**It is possible to access the library from Monday to Friday and borrow books. Opening hours may vary.**

#### **↳ Sports & Students Associations**



**At ENSEA, Sports and Students Association offers you many activities within the framework of the associations.**

### **C.4. Shopping in Cergy-Pontoise**

#### **↳ Centre Commercial “Les Trois Fontaines”**

**Nearby there is also the Centre Commercial “Les Trois Fontaines”, which contains lots of clothes shops, leisure shops (Go Sport, Fnac, Micromania), fastfoods and also a big supermarket (Auchan). The Centre is located at 15 minutes by foot from ENSEA, and is often crowded at lunch time and on Saturdays.**

**At last, there is also a Hard Discount Supermarket (Leader Price) which is only at 7 minutes by foot from the School.**

## C.5. Visiting Paris

Paris is the capital of fashion, its very famous streets like “Les Champs Elysées”, or “Le Forum des Halles” are around 40 minutes from Cergy using the RER (see the Transport section for fares).

*The most famous .....*

↪ The Eiffel Tower

**Champ de Mars - Underground: Bir-Hakeim (line 6) -  
RER: Champ de Mars Tour Eiffel (line C) - [www.tour-eiffel.fr](http://www.tour-eiffel.fr)**

↪ The Arc de Triomphe

**Plaza Charles-de-Gaulle  
Underground / RER: Charles-de-Gaulle/Étoile  
Open from 10 am to 10:30 pm**

↪ The Louvre Museum

**99 rue de Rivoli - Paris 1er - [www.louvre.fr](http://www.louvre.fr)  
Metro: Palais-Royal (lines 1 et 7), Louvre (line 1)  
Museum opens from 9am to 6pm; Opens in the evening  
until 10pm on Wednesdays and Fridays, closes on  
Tuesdays**





• The Orsay Museum

1 rue de la Légion d'Honneur, Paris - [www.musee-orsay.fr](http://www.musee-orsay.fr)

**Metro:** Solférino (line 12), Assemblée nationale (line 12)

**RER:** Musée d'Orsay (line C)

**Open every day except on Mondays from 9:30am to 6pm (9:45 on Thursdays)**



Moreover

**Most monuments and museums are free on the first Sunday of every month. But they are closed on Tuesdays. So plan ahead! To visit Paris on the weekends and holidays, remember to purchase a “Ticket Jeunes”. This ticket entitles students under 26 to an unlimited number of rides per day for around €7. To come home after an evening in Paris you can take the Noctilien night bus N° 150. This bus leaves the Saint-Lazare train station every hour starting at 1am and will take you back to Cergy-le-Haut for around €5 ([www.noctilien.fr](http://www.noctilien.fr))**



## V) USEFUL ADDRESSES AND TELEPHONE

### C.6. Healthcare facilities

- ✚ René Dubos Hospital  
**6, avenue de l'Île de France 95300 PONTOISE**  
**Tel. : 01.30.75.40.40**
- ✚ Medical centre : centre commercial "Les 3 Fontaines"  
**Tel. : 01 30 30 06 30**
- ✚ Pharmacy "l'Etoile" : centre commercial "Les 3 Fontaines"  
**Tel. : 01 30 30 00 44**
- ✚ Pharmacy "Trois Fontaines" : centre commercial "Les 3 Fontaines"  
**Tel. : 01 30 73 04 54**

### EMERGENCY

SOS médecins (Physicians coming to your place anytime) **Tel.: 01 30 40 12 12**

- ✚ POLICE: 17
- ✚ FIRE BRIGADE: 18
- ✚ SAMU (Emergency Medical Service):15

### To call a number in France from abroad

**Don't forget to dial 00 33 + the area code without the 0 + the 8 digit number.**

***For example, if you want to call the SRI dial 0033 1 30 73 66 66.***

### To phone a foreign country from France

**Dial 00 for international calls + the country code, before dialling the number**

