



香港城市大學
City University of Hong Kong

專業 創新 胸懷全球
Professional · Creative
For The World

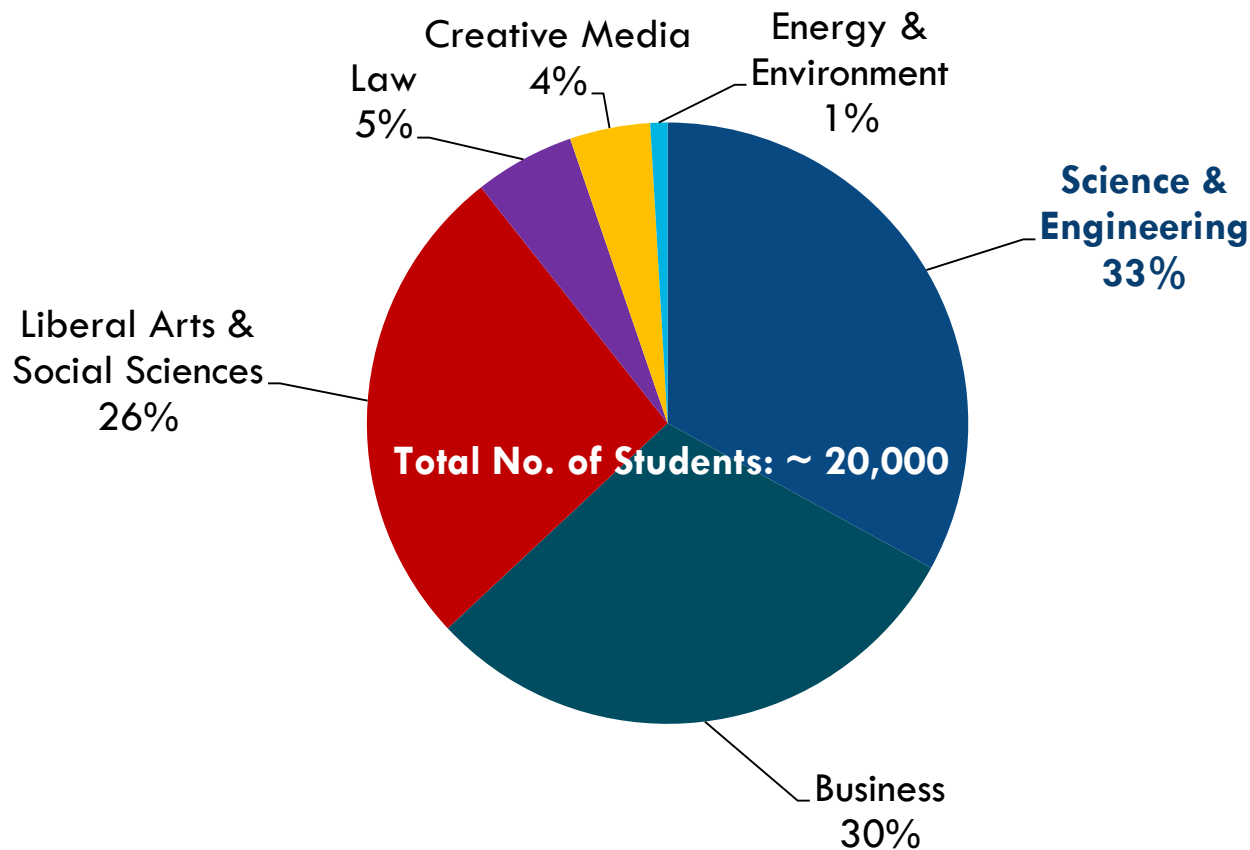
City University of Hong Kong

Discover&Innovate@CityU



College of Science and Engineering ²

- CSE share the largest population of students at CityU



College of Science and Engineering³

□ CSE has 9 Departments and 1 Division

Department of Biology and Chemistry (BCH)

Department of Biomedical Sciences (BMS)

Department of Architecture and Civil Engineering (ACE)

Department of Computer Science (CS)

Department of Electronic Engineering (EE)

Department of Mathematics (MA)

Department of Mechanical and Biomedical Engineering (MBE)

Department of Physics and Materials Science (AP)

Department of Systems Engineering and Engineering Management (SEEM)

Division of Building Science and Technology (BST)

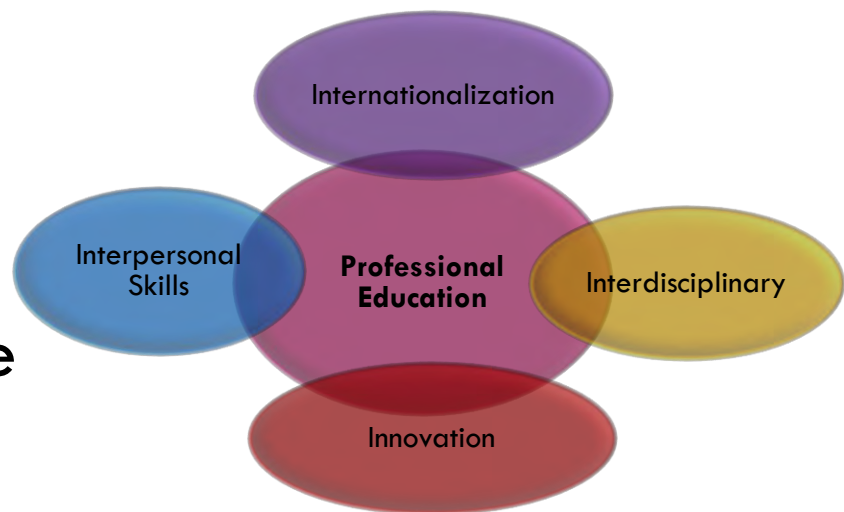
College of Science and Engineering ⁴

Vision

To win international recognition as one of the best science and engineering colleges in the Asia-Pacific region

Mission

To nurture and develop the talents of students and create applicable knowledge to support social and economic advancement



International Ranking

City University of Hong Kong aspires to become a leading global university, excelling in research and professional education.

We have performed strongly and consistently in global ranking exercises.

CityU is ranked #1 in Hong Kong in terms of citations per faculty

**World
university
rankings**

Asian university rankings

9th

Top 50 under 50

5th

124th
2009

129th
2010

110th
2011

108th
2014

57th
2015

According to Quacquarelli Symonds (QS).



International Ranking

6

Quacquarelli Symonds (QS) World University Rankings 2016

by subjects (Top 100)	
Mathematics	39 th
Civil & Structural Engineering	45 th
Computer Science & Information Systems	49 th
Architecture/ Built Environment	Top 100 th
Electrical & Electronic Engineering	
Materials Science	
Mechanical, Aeronautical & Manufacturing Engineering	



Performance Ranking of Scientific Papers for World University by National Taiwan University 2015

	Hong Kong	Asia-Pacific	Worldwide
In Engineering	1 st	9 th	20 th



Source:

Quacquarelli Symonds (QS) World University Rankings 2016 <http://www.topuniversities.com/subject-rankings/2016>

Performance Ranking of Scientific Papers for World University by National Taiwan University 2015 <http://nturanking.lis.ntu.edu.tw/>

International Ranking

7

Academic Ranking of World Universities by Shanghai Jiao Tong University

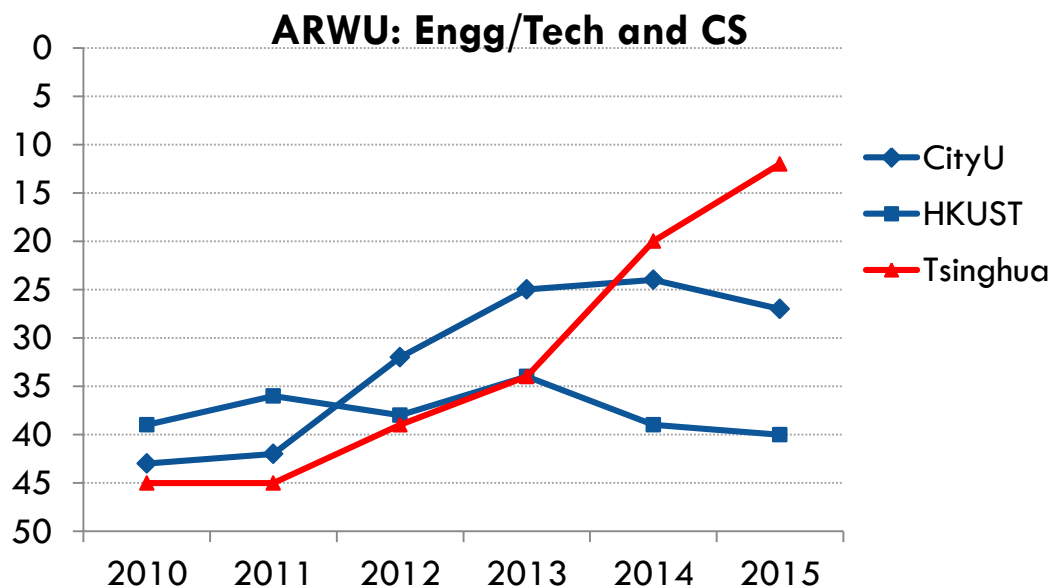
	2010	2011	2012	2013	2014	2015
(By fields) Engineering/Technology and Computer Sciences	43	42	32	25	24	27
(By subjects) Mathematics	51-76	52-75	51-75	49	28	22
(By subjects) Computer Science	45	50	51-75	42	37	45

1st in Hong Kong
3rd in greater China

Source: ARWU by Shanghai Jiao Tong University (2015) by Fields:
<http://www.shanghairanking.com/FieldENG2015.html>



香港城市大學
City University of Hong Kong
專業 創新 國際
Professional · Creative
For The World



Undergraduate majors

8

Department of Architecture and Civil Engineering

- Building Services Engineering
- Civil Engineering
- Surveying

Department of Biology and Chemistry

- Applied Biology
- Chemistry
- Environmental Science and Management

Department of Biomedical Sciences

- Biomedical Sciences

Department of Computer Science

- Computer Science

Department of Electronic Engineering

- Computer and Data Engineering
- Electronic and Communication Engineering
- Information Engineering

Undergraduate majors

9

Department of Mathematics

- Computing Mathematics

Department of Mechanical and Biomedical Engineering

- Bioengineering
- Mechanical Engineering
- Nuclear & Risk Engineering

Department of Physics and Materials Science

- Applied Physics
- Materials Engineering

Department of Systems Engineering and Engineering Management

- Systems Engineering and Management

Top-up Bachelor's Degree

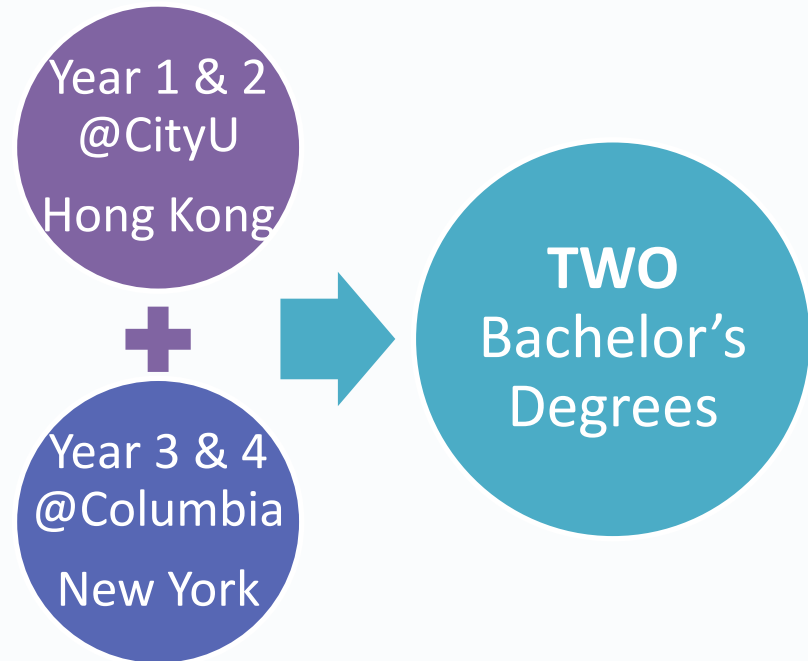
Architectural Studies ^

Biomedical Sciences ^

^For holders of associate degree of higher diploma or an equivalent qualification

Joint Bachelor's Degree Program between CityU and Columbia University

- A **global undergraduate educational experience**—a program with an international character not only in its academic coursework but also in its practical application.



- Upon the completion of all academic requirements prescribed by both CityU and Columbia University, students graduate with **two bachelor's degrees**: one degree from CityU and one degree from Columbia University

Postgraduate programmes

11

MSc Programmes

- Master of Architecture
- Master of Urban Design and Regional Planning
- MSc Construction Management
- MSc Civil and Architectural Engineering
- MSc Computer Science
- MSc Electronic Commerce
- MSc Electronic Information Engineering
- MSc Multimedia Information Technology
- MSc Advanced Technology and Management
- MSc Materials Engineering and Nanotechnology
- MSc Engineering Management

Engineering Doctorate

- Engineering Management

Our Staff

12

	No. of Staff
Academic Staff	~ 320
Research Staff	~ 450
Administrative/ Supporting Staff	~ 265

- Quality research team with 8 academicians, and fellows of various academic societies



Academicians

13



Prof Alain Bensoussan

Fellow of the National Academy of Tech. of France
Member of the Academia Europaea
Member of the French Academy of Sciences
Member of the International Academy of Astronautics



Prof Ron Chen 陈关荣教授

Fellow of The World Academy of Sciences
Member of the Academia Europaea



Prof Paul Chung 钟宝璇教授

Fellow of the Royal Academy of Engineering, UK



Prof Philippe Ciarlet

Asso. Fellow of the Academy of Sciences for the Developing World
Fellow of the American Mathematical Society
Fellow of the Hong Kong Institution of Science
Fellow of the Society for Industrial and Applied Maths
Foreign member of the Chinese Academy of Sciences
Member of the Academia Europaea
Member of the Academy of Sciences of Hong Kong
Member of the European Academy of Sciences
Member of the French Academy of Science
Member of the French Academy of Technologies
Member of the National Academy of Sciences of India
Member of the Romanian Academy
Senior Fellow of the CityU Institute for Advanced Study



Prof Way Kuo 郭位教授

Academia Sinica Taiwan
Foreign Member of the Chinese Academy of Engineering
Foreign member of the Russian Academy of Engineering
Member of the US National Academy of Engineering
Senior Fellow of the CityU Institute for Advanced Study



Prof C T Liu 刘锦川教授

Academia Sinica in Taiwan
Foreign Member of the Chinese Academy of Engineering
Member of the US National Academy of Engineering
Senior Fellow of the CityU Institute for Advanced Study



Prof Jian Lu 吕坚教授

Fellow of the National Academy of Technologies of France

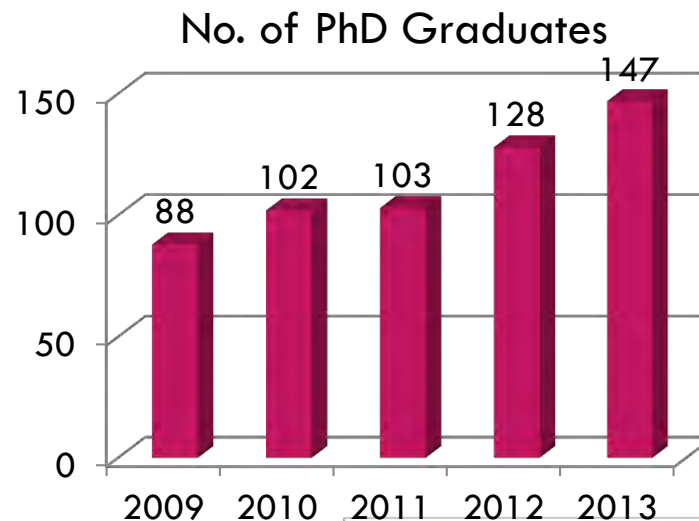
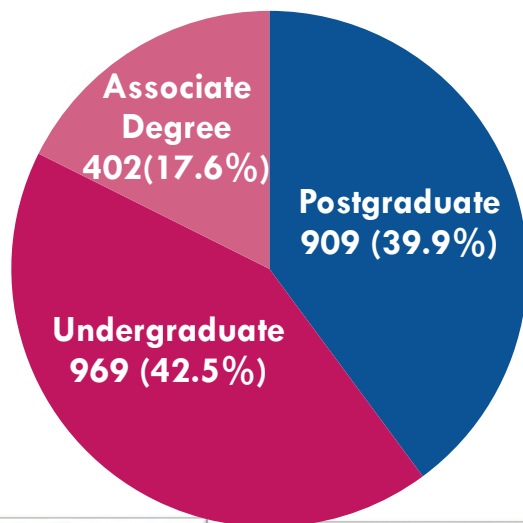


Prof Roderick Wong 王世全教授

Fellow of the Royal Society of Canada
Foreign Member of the Academy of Sciences of Turin
Member of the European Academy of Sciences

Our Graduates (as of June 2015)

14



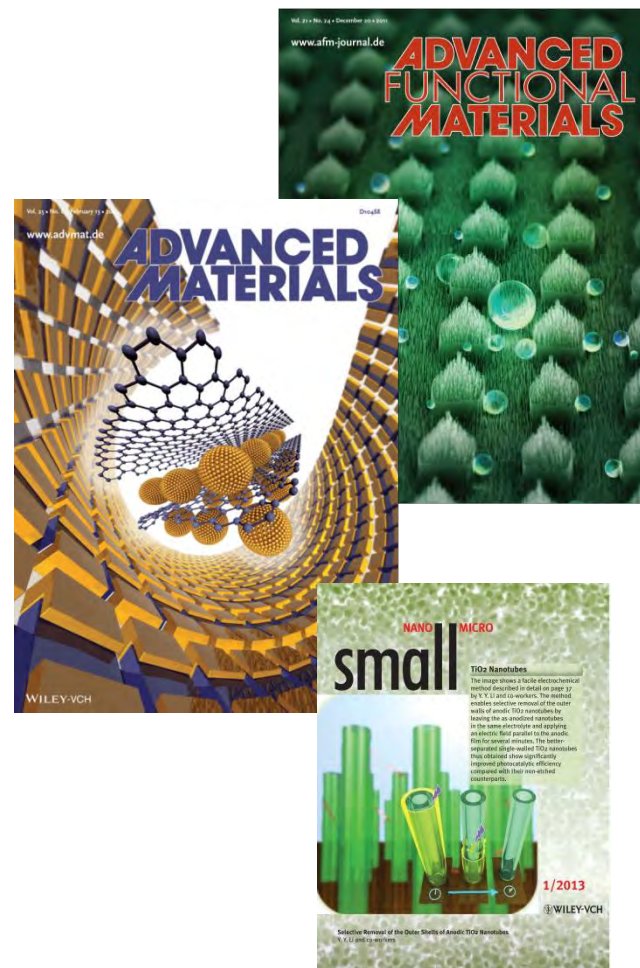
Research Output (2014)

15

Department	Number of SCI-listed Journal Papers	Number of paper per capita* (as at 31/12/2014)
Architecture and Civil Engineering	195	4.9
Biology & Chemistry	191	8.0
Biomedical Sciences	14	1.3
Building Science & Technology	18	2.6
Computer Science	181	4.9
Electronic Engineering	289	5.3
Mathematics	102	3.5
Mechanical and Biomedical Engineering	195	6.5
Physics & Materials Science	376	12.5
Systems Engineering and Engineering Management	107	5.6
College total/average	1,569**	5.5

*Assistant Professors and above

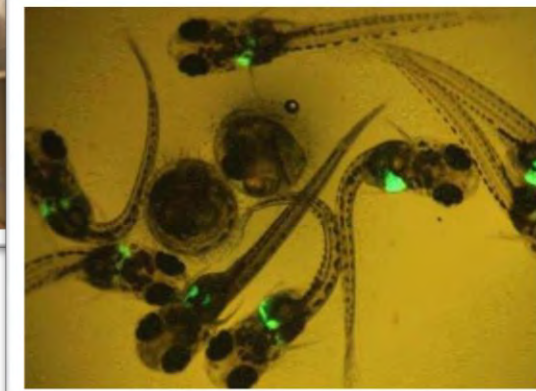
**Co-authored papers involving more than one department are counted once only.



State Key Laboratories

16

- State Key Laboratory in Marine Pollution
- State Key Laboratory of Millimeter Waves



Joint Laboratories with the Chinese Academy of Sciences

17

- Joint Laboratory of Nano-organic Functional Materials and Devices (with Technical Institute of Physics and Chemistry)
- Joint Laboratory of Nanomaterials and Mechanics (with Institute of Metal Research)

Research Centres

18

- 1) Centre for Advanced Structural Materials
- 2) Centre for Biosystems, Neuroscience, and Nanotechnology
- 3) Centre for Chaos and Complex Networks
- 4) Centre for Electronic Packaging and Assemblies, Failure Analysis and Reliability Engineering
- 5) Centre for Functional Photonics
- 6) Centre for Innovative Applications of Internet and Multimedia Technologies
- 7) Centre for Robotics and Automation
- 8) Centre for Smart Energy Conversion and Utilization Research
- 9) Centre of Super-Diamond and Advanced Films
- 10) Centre for Systems Informatics Engineering
- 11) Liu Bie Ju Centre for Mathematical Sciences
- 12) Multimedia Software Engineering Research Centre



Hong Kong PhD Fellowship 2016/17

Entrance Requirement

Applicants seeking admission to PhD at CityU should satisfy the following minimum entrance requirements:

- Hold a higher degree by research (or equivalent qualification) from a recognised university; or
- Hold a taught Master's degree (or equivalent qualification) from a recognized university; or
- Hold a Bachelor's degree with first class honours (or equivalent qualification) from a recognised university.

English Proficiency Requirements

Applicants from an institution where the language of teaching is not English should satisfy the following minimum English Proficiency requirements:

- A minimum TOEFL score of 550 (paper-based) or 213 (computer-based) or 79 (internet-based); or
- A minimum overall band score of 6.5 in IELTS

Hong Kong PhD Fellowship 2016/17

What the Fellowship Offers?

A monthly stipend of HK\$20,000 (approximately US\$2,600)

A conference and research-related travel allowance of HK\$10,000 (approximately US\$1,300) per year

CityU will additionally offer:

The Chow Yei Ching School of Graduate Studies Entrance Scholarship of HK\$69,096 (approximately US\$8,858) covering tuition and on-campus hostel accommodation fees in their 1st year of research studies

How to apply to CityU?

Submit
application
to both

RGC's online Application System at www.rgc.edu.hk/hkphd

CityU's Online Admission System at www.cityu.edu.hk/sgs/oas



□ Student Exchange Programmes

- with renowned universities such as University of Toronto, University College London, Ecole polytechnique, University of Illinois at Urbana-Champaign

□ Joint Degree Programmes

- Pilot in the Joint Bachelor's Degree Program with Columbia University, US
- Joint PhD Program with Polytechnique Montréal, Canada

□ Overseas Internship Programmes

- at companies and institutions such as Rider Levett Bucknall, University of Cambridge, Imperial College London, UCLA

□ Academic collaboration links

- with renowned universities such as University of Cambridge, Tsinghua University, Imperial College London

College-level Exchange Partners

22

- More than 40 active exchange partner universities at College level

Canada

- Acadia University
- Dalhousie University
- Polytechnique Montreal
- Queen's University
- University of Toronto
- University of Alberta
- University of British Columbia

United States

- University of Illinois at Urbana-Champaign
- University of Maryland, College Park
- Vanderbilt University

Chile - University Adolfo Ibanez

Finland

- Aalto University
- Tampere University of Technology

Sweden

- Chalmers University of Technology
- KTH Royal Institute of Technology
- Linköping University
- Lund University
- University of Skövde

UK

- University College London
- University of Kent
- University of Warwick
- University of Bath

France

- Ecole Polytechnique
- Grenoble Institute of Technology
- INSA Toulouse
- Polytech Nice-Sophia
- Polytech Tours
- Universite Montpellier 2

Germany

- Nuremberg Institute of Technology George-Simon-Ohm
- Ludwig-Maximilians-Universität München
- Leibniz Universität Hannover
- University of Mannheim

Denmark - Technical University of Denmark

Netherlands - University of Twente

Turkey - Sabanci University

Italy - Politecnico di Milano

Mainland China

- Nanjing University
- Nankai University
- Beijing University of Posts and Telecommunications

Macau - University of Macau

India

- Indian Institute of Technology Bombay

South Korea

- Yonsei University
- Konkuk University

Japan

- Kyushu University
- Kyoto University
- Osaka University

Taiwan

- National Central University
- National Taiwan University of Science and Technology (Taiwan Tech)
- University System of Taiwan

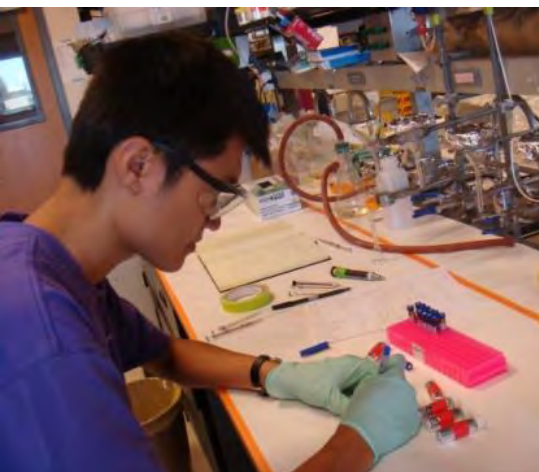
Australia

- Griffith University
- University of Wollongong

Internship Programmes

23

- Over 4500 students joined the internship schemes in the past decade
 - ▣ Industrial Attachment Scheme (IAS)
 - ▣ Co-operative Education Scheme (CES)
 - ▣ Overseas Internship Scheme (OIS)



Overseas Internship Partners

24

Canada

- University of Saskatchewan
- Simon Fraser University

United States

- Arizona State University
- Lamar University
- Rider Levett Bucknall – Hawaii
- University at Buffalo, SUNY
- University of Tennessee
- University of California Los Angeles

Finland

- Aalto University
- Tampere University of Technology

UK

- Brunel University
- City University London
- Imperial College London
- King's College London
- Liverpool John Moores University
- Loughborough University
- Rider Levett Bucknall - UK Birmingham
- The University of Derby
- University of Cambridge
- University of Portsmouth
- University of Surrey
- University of York

France

- IMS-University of BORDEAUX
- Universite Montpellier 2

Poland

- Delphi E&S Technical Centre Krakow

Germany

- Nuremberg Institute of Technology George-Simon-Ohm
- University of Wuerzburg

Japan

- National Institute of Advanced Industrial Science and Technology (AIST)

Singapore

- Rider Levett Bucknall LLP

Thailand

- National Center for Genetic Engineering and Biotechnology (BIOTEC)

Taiwan

- China Medical University
- National Central University
- National Chiao Tung University
- National Synchrotron Radiation Research Center
- National Yang-Ming University
- Taipei Veterans General Hospital

New Zealand

- Rider Levett Bucknall - Auckland

Our Industrial Partners

...strong linkage with more than 400 companies & overseas institutions

25





Thank you

College of Science and Engineering
City University of Hong Kong
www.cityu.edu.hk/cse
robert.li@cityu.edu.hk